

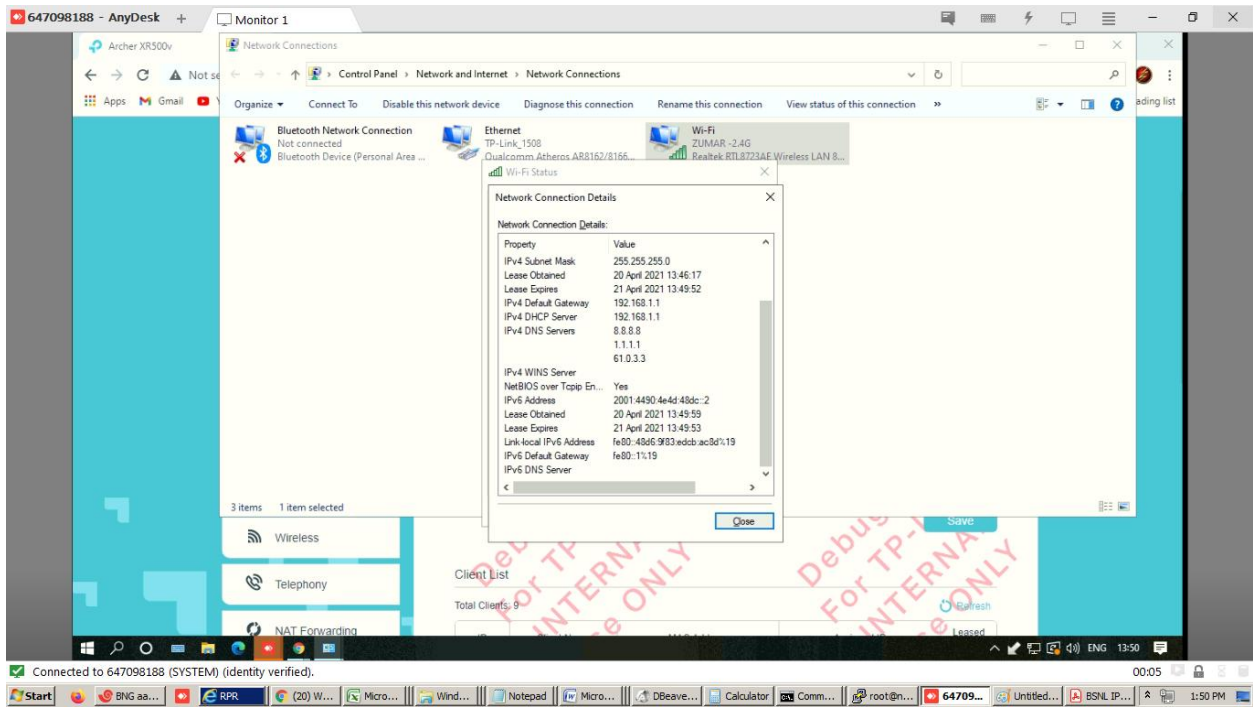
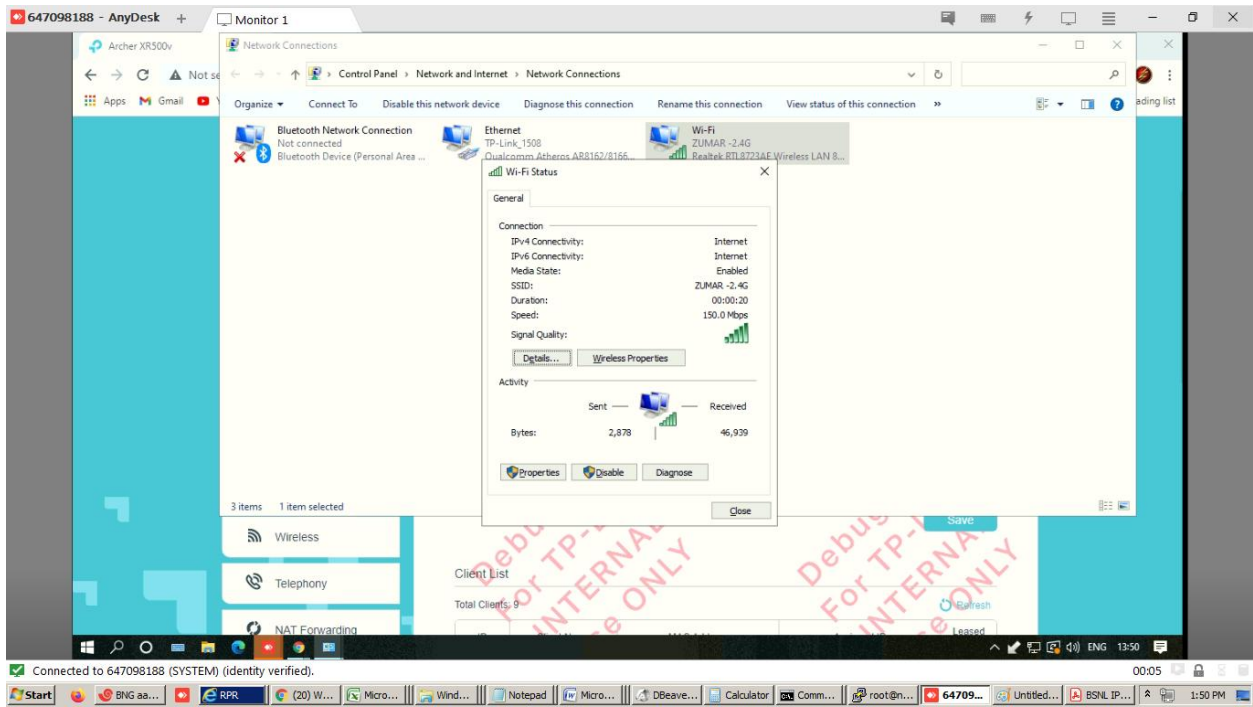
# Tplink Archer XR 500v

This screenshot shows the 'Advanced' tab of the TP-Link Archer XR 500v web interface. The 'Multicast VLAN' is set to 130. The 'Connection Type' is 'PPPoE' with 'Username' 'au2966651\_sid@tth.bsnl.in' and 'Password' '\*\*\*\*\*'. The 'Connection Mode' is 'Auto'. The 'Authentication Type' is 'Auto'. The 'IPv4' section has 'Enable' checked. The 'Default Gateway' is 'pppoe\_130\_0\_0\_d'. The 'IPv6' section has 'Enable' checked. The 'Addressing Type' is 'DHCPv6'. The 'IPv6 Default Gateway' is 'Current Connection'. Red circles highlight the 'IPv6' and 'Addressing Type' fields.

Connected to 647098188 (SYSTEM) (identity verified).

This screenshot shows the 'DHCP Server' configuration page in the 'Advanced' tab. The 'IP Version' is set to 'IPv6'. The 'Group' is 'Default'. The 'Address Type' is 'DHCPv6 Server'. The 'Starting IPv6 Address' is '2001:4490:4e4d:48dc::1 (1-FFFE)'. The 'Ending IPv6 Address' is '2001:4490:4e4d:48dc::FFFE (1-FFFE)'. The 'Address Lease Time' is '86400 seconds'. The 'Site Prefix Type' is 'Delegated'. The 'WAN Connection' is 'pppoe\_130\_0\_0\_d'. A 'Save' button is visible. Red circles highlight the 'IP Version', 'Address Type', and 'Site Prefix Type' fields.

Connected to 647098188 (SYSTEM) (identity verified).



647098188 - AnyDesk + Monitor 1

Archer XR500v x Test your IPv6.

test-ipv6.com

Test IPv6 | FAQ | Mirrors | stats

## Test your IPv6 connectivity.

Summary | Tests Run | Share Results / Contact | Other IPv6 Sites | For the Help Desk

- Your IPv4 address on the public Internet appears to be 117.217.203.28
- Your IPv6 address on the public Internet appears to be 2001:4490:4e4d:48dc:3ca9:a19b:3859:8e9b
- Your Internet Service Provider (ISP) appears to be BSNL-NIB National Internet Backbone
- Since you have IPv6, we are including a tab that shows how well you can reach other IPv6 sites. [\[more info\]](#)
- HTTPS support on this web site is in **beta**. [\[more info\]](#)
- Your DNS server (possibly run by your ISP) appears to have IPv6 Internet access.

**Your readiness score**

**10/10** for your IPv6 stability and readiness, when publishers are forced to go IPv6 only

Click to see [Test Data](#)

(Updating server side IPv6 readiness stats)

Copyright (C) 2010, 2020 Jason Fesler. All rights reserved. Version 1.1.892 (720e43a)  
[Mirror](#) | [Source](#) | [Home](#) | [About Us](#) | [Contact Us](#) | [Help Us](#) | Share on [Facebook](#) [Twitter](#)  
This is a mirror of testipv6.com. The views expressed here may or may not reflect the views of the mirror owner.

Connected to 647098188 (SYSTEM) (identity verified). 00:06

Start | BNG aa... | RPR | (20) W... | Micro... | Wind... | Notepad | Micro... | DBBeave... | Calculator | Comm... | root@n... | 64709... | Untitled... | BSNL IP... | 1:50 PM